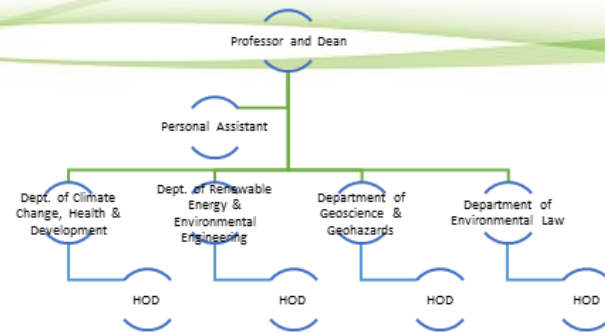


Organic Structure of SECC



For more information contact:

Papua New Guinea University of Natural Resources & Environment

THE SENIOR ASSISTANT REGISTRAR

Academic & Student Administration Office

Papua New Guinea University of Natural Resources & Environment

Private Mail Bag

KOKOPO

East New Britain Province

Phone: 987 1258 / 983 9249

Fax: 983 9249 / 983 9166

Email: studentadmin@unre.ac.pg

School of Environment & Climate Change (SECC)

“Striving for Climate Compatible Development”

School Information



SECC Resource Centre

Our SECC Resource Centre will integrate UNRE Library Services, Centre of Self-Education, ICT, other Schools, Departments, and Sections to provide the best e-Library, Learning and Resource Facility in the Region.



Our location.

The school is located at the PNG UNRE Vudal Campus in East New Britain Province. The majestic environment and peaceful surrounding communities makes an ideal place for your learning and personal growth and development.



Background

The School of Environment & Climate Change (SECC) was established in 2019 following the National Government's Focus Areas and PNG UNRE's Strategic Plans to increase capacity building in the environment, climate change, renewable energy and environmental engineering fields.

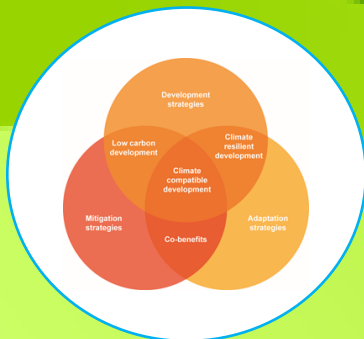
There are currently two programs offered under the school, **Bachelor in Environment & Climate Change** and **Bachelor in Renewable Energy & Environmental Engineering**.

Our Vision

To help increase national, regional and international efforts in combatting climate change by building capacity for climate change adaptation and mitigation measures. We aim to contribute solutions to the enormous resources and environmental challenges faced globally in the present and in the years to come.

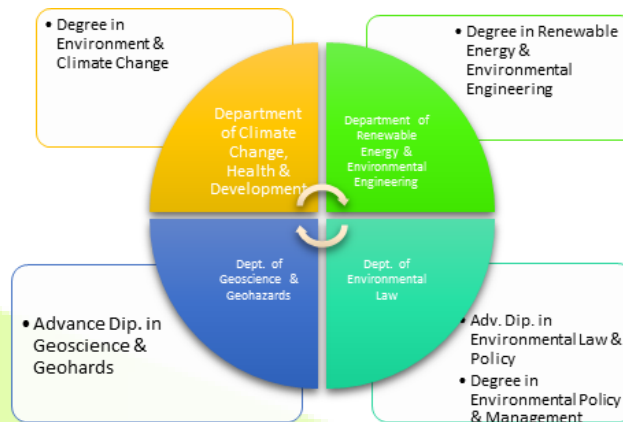
Our Motto

Striving Towards Climate Compatible Development.



Academic Departments and Programs

1. Department of Climate Change, Health & Development offers Bachelor in Environment & Climate Change program.
2. Department of Renewable Energy & Environmental Engineering offers Bachelor in Renewable Energy & Environmental Engineering.
3. Proposed Departments & Programs
 - Department of Geoscience & Geohazards will offer Advance Diploma in Geosciences & Geohazards.
 - Department of Environmental Law will offer Advance Diploma in Environmental Law & Policy and Bachelor in Environ-



SECCs Core Values & Activities

SECC is involved in teaching & learning, research and outreach with the main concept of encouraging sustainable development, minimizing harm caused by climate change impacts while maximizing a myriad of development opportunities presented by a low emission and more resilient future.

In the Pacific Island Countries (PICs) and Small Island Developing States (SIDS) like PNG, climate change adaptation and mitigation responses are changing patterns of innovation, trade, production, population distribution, health and risks in complex and interrelated ways.

SECC at PNG UNRE hopes to create a new development landscape for staff, students, researchers and policy makers who need to nurture and sustain the economic growth and social development in the face of multiple threats and uncertainties while also cutting emissions or keeping them low.

At PNG UNRE, SECC hopes to help strengthen learning and knowledge acquisition by both staff and students and develop respectful high caliber research and leadership skills in order to understand the earth's environment and the changing climate in PNG and the region.

SECC strives to be gender-sensitive and inclusive, and works on developing a peaceful society where government in partnership with its citizens, academics and civil societies embrace diversity, equality and equity to promote sustainable development for all.

Why Study with Us?

PNG is a nation that is immensely rich in biological and cultural diversity. The wealth of natural resources is the bed-rock upon which UNRE is founded. However, in recent years up until now climate change impacts are affecting developments across sectors. Energy supply issues and environmental degradation will continue to affect our economy and ecosystems.

We are the only university and school in the country that is solely dedicated to human resource development in the sustainable use of our natural renewable resources and management of our environment. You are part of our mission. Join us to help PNG become resilient and a low-carbon nation.